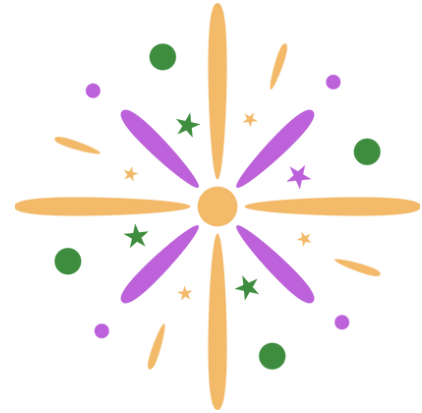




Response Matrix

WHAT'S IN THIS ISSUE:

- Commitment to EBP
- Matrix Purpose
- Key Benefits
- Instructions



Why?

A matrix incentive response system is a powerful tool in probation settings for promoting accountability and supporting successful reintegration.

By standardizing decision-making, aligning interventions with client needs, and reinforcing positive behavior, the use of response matrices ensures fairness, transparency, and structure—key elements for rehabilitation and long-term behavior change.

This evidence-based approach strengthens accountability while contributing to more effective outcomes for both clients and the community.

Key Benefits

- CONSISTENCY & FAIRNESS
- EVIDENCE-BASED DECISIONS
- LEVEL-BASED INTERVENTIONS
- POSITIVE REINFORCEMENT
- ACCOUNTABILITY
- TRANSPARENCY
- LEGAL & ETHICAL COMPLIANCE

Instructions

1. **IDENTIFY BEHAVIOR TYPE** (Incentive or Intervention)
2. **CLASSIFY BEHAVIOR SEVERITY** (Minor, Moderate, Major)
3. **ALIGN WITH SUPPORT LEVEL** (Low, Medium, High)
4. **SELECT APPROPRIATE RESPONSE** (Swift Action)

